



THE HUMAN BEING CREATED IN THE BEST OF FORM WITH A POTENTIAL TO RISE AND GROW IN SPIRITUAL PERFECTION

095

AL-TEEN - THE FIG

ALLAH – THE MOST WISE JUDGE

Allah's Judgement and Wisdom is the laws and orders
He has devised for us to reach our full potential.

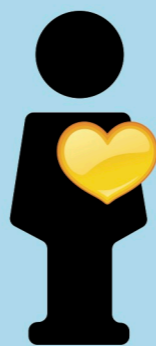


3

Ayaat 7-8

HUMAN BEINGS CREATED FOR A HIGHER PURPOSE

1. Human beings are the only creation with the freedom and freewill to ascend to the peak of excellence.
2. Human beings can also be the lowest of the low.
3. Except those who believe and manifest the belief through good deeds.



2

Ayaat 4-6

FOUR OATHS

1. Figs are a symbol of resilience growing even in harsh conditions
2. Olives manifest resilience differently living up to a thousand year
3. Allah addressed Musa (pbuh) at Mount Sinai where olives grew 23:20
4. The secure city is Makka which Ibraheem (pbuh) established as the centre of monotheism and the mission completed by Muhammad (pbuh)



1

Ayaat 1-3

095. Al-Teen ~ The Fig
8 Ayaat (Makki)

FOCUS

THE HUMAN BEING CREATED IN THE BEST OF FORM WITH A POTENTIAL TO RISE AND GROW IN SPIRITUAL PERFECTION

DID YOU KNOW?

THERE IS RELATIONSHIP BETWEEN THE FOUR OATHS AND THE HUMAN BEING CREATED IN THE BEST OF MOULDS

THE GREATEST OF HUMAN BEINGS - ULUL AZHM PROPHETS
THE FIG MAY REFER TO THE MOUNTAIN OF FIGS (MOUNT JUDI) **PROPHET NUH**
THE OLIVE MAY REPRESENT THE MOUNT OF OLIVES (JERUSALEM) **PROPHET ISA**
MOUNT SINAI MAY REPRESENT **PROPHET MUSA**
THE SECURE CITY – MAKKA MAY REPRESENT **PROPHET IBRAHEEM** AND **PROPHET MUHAMMAD**

SELECTED AYAAT

- 95:1 (I swear) By the fig and the olive.
- 95:2 And Mount Sinai.
- 95:3 And this secure city.
- 95:4 We created the human being in the most beautiful form.
- 95:5 Then brought him down to the lowest of the low.
- 95:6 Except those who believe and do good deeds, theirs will be a reward unending.

NARRATIVE

AMONG THE ARABS OF THAT ERA, FIGS AND OLIVES HELD A DISTINGUISHED AND UNIQUE PLACE. THE FIG TREE AND THE OLIVE TREE ARE BOTH KNOWN FOR THEIR RESILIENCE. THE CHAPTER'S FIRST TWO OATHS POINT OUT THAT THESE PLANTS HAVE THE BEST 'TAQWEEM' (BEST OF MOULDS) TO RISE, BE STRONG AND GROW IN PERFECTION.

MT SINAI AND MAKKA IN THE NEXT TWO OATHS ARE THE REGIONS FROM WHERE MOST OF THE PROPHETS (BEST OF HUMAN BEINGS).

THE CONCLUSION TO THE OATHS FOLLOWS IN THAT THE HUMAN BEING HAS BEEN CREATED IN THE BEST OF MOULDS (TAQWEEM WHICH CONNOTES A STATE OF GROWING, RISING AND PERFECTION) BUT CAN DESCEND TO BE THE LOWEST EXCEPT FOR THOSE WHO BELIEVE AND MANIFEST THEIR BELIEF IN SERVING HUMANITY - A MESSAGE SIMILAR TO SURATUL 'ASR (103). THE REWARD IS IN PROPORTION TO THE ASCENSION.

THE CHAPTER ENDS WITH REMINDER THAT ALLAH'S 'HUKM' IS THE LAW AND ORDER HE HAS DEvised FOR HUMAN BEINGS AND WE WILL REAP WHAT WE SOW.